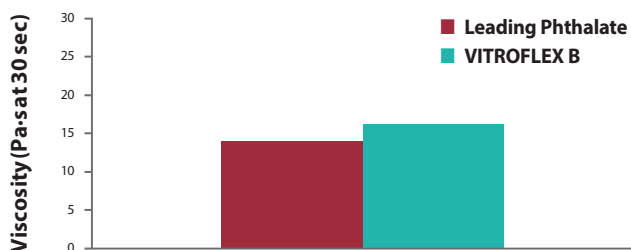




## VITROFLEX™ B Plasticizer for Polysulfide Sealants

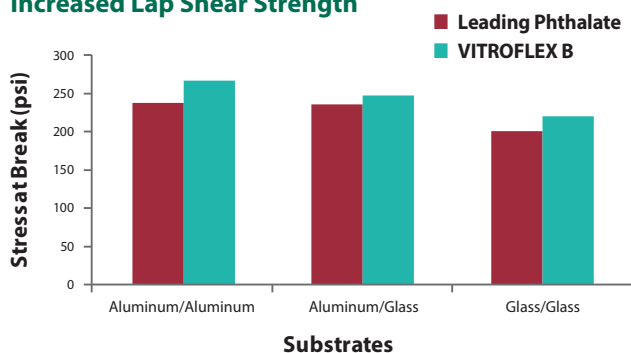
VITROFLEX B from Emerald Kalama Chemical helps formulators to achieve an **ideal balance of adhesion and flexibility** in polysulfide sealant applications. Polysulfide sealants provide high elasticity, adhesion, solvent resistance, and weathering resistance in applications such as insulated glass, construction, and transportation and can be formulated to pass the most stringent performance requirements. As traditional phthalate plasticizers have been increasingly subject to regulatory pressure, VITROFLEX B replaces phthalate plasticizers while meeting or exceeding the performance requirements of these applications.

### High Viscosity Stability Equivalent to Phthalates



Both components of a polysulfide system must have similar viscosities for even mixing. B-side polysulfide sealant formulations with VITROFLEX B exhibit high viscosity stability and show no signs of settling.

### Increased Lap Shear Strength



Replacing a leading phthalate plasticizer with VITROFLEX B in the B-side resulted in cohesive failure and improved lap shear stress at break, demonstrating very good adhesion to substrates such as aluminum and glass.

- Faster **hardness development**
- Improved **lap shear strength**
- Excellent **flexibility and adhesion properties** tailored for applications such as sealing insulated windows
- Non-settling (high **viscosity stabilization**) and **elongation**
- Superior **compatibility** for greater formulation stability over time
- Equivalent **pot life** to other common plasticizers
- **Non-phthalate**, non-SVHC, REACH registered
- Reliable supplier with centralized **manufacturing in Europe** and global distribution



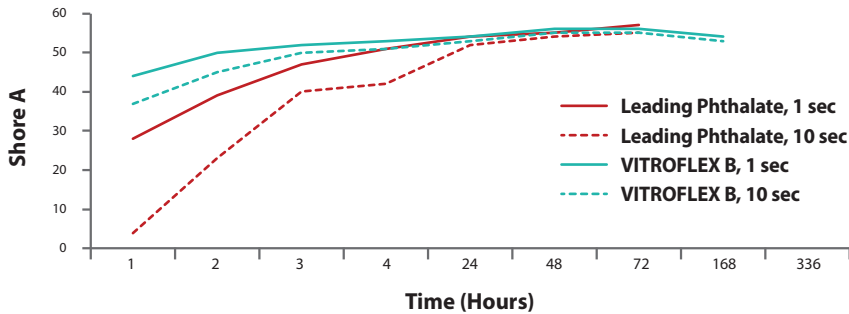
2-part polysulfide seal in an insulated window system

# VITROFLEX™

#### Orders and Inquiries:

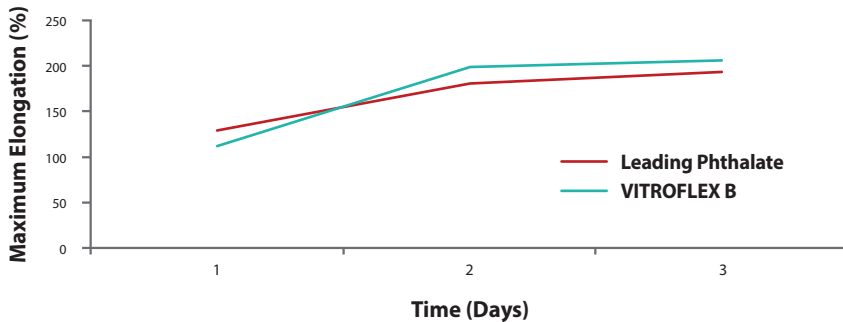
Contact us at 800-223-0035 or 360-954-7100  
[kflex@emeraldmaterials.com](mailto:kflex@emeraldmaterials.com)

## Faster Hardness Development



VITROFLEX™ B plasticizer contributes to faster cure rates in B-side polysulfide formulations.

## Excellent Flexibility (ASTM D412 Elongation Method)



B-side polysulfide formulations with VITROFLEX B plasticizer maintain excellent adhesion while providing flexibility for tailored performance in insulated window sealant applications.

**Emerald Kalama Chemical** is a business group of Emerald Performance Materials, a manufacturer of additives and polymers that make your products last longer, look, taste, smell, or perform better. We are a world-scale producer of toluene oxidation products, shipping over 500 million pounds annually to approximately 75 countries across the globe. With manufacturing in the U.S. in Kalama, WA, Akron, OH, and Henry, IL, as well as Rotterdam, Netherlands and Widnes, UK, we serve customers globally.

**Disclaimer** The information contained herein is believed to be reliable, however is based upon laboratory work with small scale equipment and does not necessarily indicate end-product performance. Because of variations in methods, conditions and equipment used commercially in processing these materials, Emerald makes no representations, warranties or guarantees, express or implied, as to the suitability of the products for particular applications, including those disclosed, or the results to be obtained. Full-scale testing and end-product performance are the responsibility of the user. Emerald Performance Materials shall not be liable for and the customer assumes all risk and liability for use and handling of any materials beyond Emerald's direct control. Nothing contained herein is to be considered as permission, recommendation or as inducement to practice any patented invention without permission of the patent owner.



## Contact Us

### Customer Service – Americas

Emerald Kalama Chemical, LLC  
Vancouver, Washington, USA

800.223.0035 | +1.360.673.2550  
kflex@emeraldmaterials.com

### Customer Service – EMEA

Emerald Kalama Chemical, BV  
Geleen, The Netherlands

+31.46.702.2911  
kflex.emea@emeraldmaterials.com

### Customer Service – Asia Pacific

Emerald Performance Hong Kong  
Wanchai, Hong Kong

+852.2598.7990  
kflex.asia@emeraldmaterials.com



[www.kflex.emeraldmaterials.com](http://www.kflex.emeraldmaterials.com)

™ Trademark of Emerald Performance Materials, LLC  
© 2017 Emerald Performance Materials, LLC

November 2017